

**Superior Seamless Gutter**  
446 Portal Street  
Cotati, CA 94931



A lasting promise from the trusted name in Metal Gutter Systems.

## COLOR SELECTION FOR STEEL GUTTERS

Select from these beautiful colors to enhance your project. Sophisticated polyester paint coating systems provide excellent flexibility and adhesion characteristics. Steel gutter profiles will retain their color and gloss for year after year beauty. Our products come complete with a lifetime performance warranty.

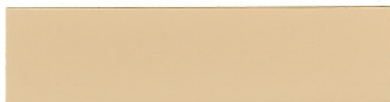
Standard coil widths are 12", 13", 14", 15" and 19", unless otherwise noted. 12", 13", 14" and 15" coils are 26 gauge Grade D steel. All 19" coils are 26 gauge Grade E steel. Custom colors, widths, gauges and Grades are available with minimum quantity requirements.

You can rely on Custom-Bilt Metals for all of your gutter materials. Roll-formers, coil and all matching accessories are available at any of the stocking locations listed below. Specific product availability may vary in each location - please inquire.

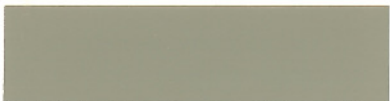
## CUSTOM-BILT METALS®

LAST-TIME® Brand Products  
Since 1974

Colors shown on this card match actual finish colors as accurately as possible, but may vary slightly from finished product.



Ivory



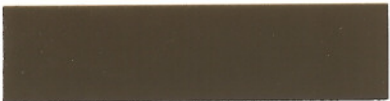
Old Towne Gray



Leaf Green



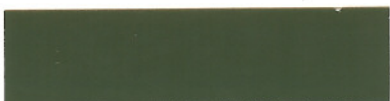
Storm Gray



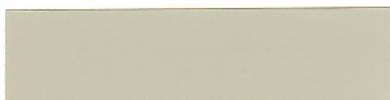
Musket Brown



Royal Brown



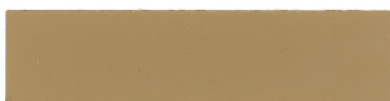
Forest Green



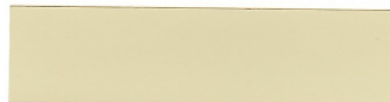
Colonial Gray



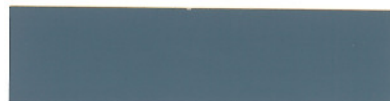
Pebblestone Clay



Buckskin Brown



Raffia Beige



Tahoe Blue



Classic Cream



White Primer



Colonial Red  
Not available in 19"



Marine Green  
Not available in 19"



Black  
Not available in 19"



Moss Green  
Not available in 19"



White



Beaver Brown